

BOX SCORE: *** FINAL ***

Date: 03-23-88 Site: State Tourney, Frankfort Attendance: 4,485

Team: Manual

NO.	NAME	TOTAL FG		3-POINT		FT	FTA	REB			PF	TP	A	TO	BLK	S	MIN
		FG	FGA	FG	FGA			O	D	T							
43	Doyle, Gwen	10	20	0	0	4	10	4	9	13	4	24	0	6	2	3	31
55	Williams, Sam.	3	11	0	0	2	2	2	2	4	0	8	0	2	2	1	27
30	James, Ramonda	4	8	0	0	0	1	6	3	9	4	8	0	2	0	2	22
22	Dean, Morek	5	14	0	0	8	11	3	1	4	1	18	3	0	0	0	32
24	Drummond, Amy	1	2	0	0	0	0	1	4	5	2	2	0	0	0	2	32
51	Smith, Angie	0	2	0	0	0	0	2	2	4	1	0	0	1	0	1	13
45	Mills, Johnnye	0	2	0	0	0	0	0	1	1	0	0	0	0	0	0	3
TEAM		23 / 59		0 / 0		14	24	18	22	40	12	60	3	11	4	9	160

Percentages:	Game-----	FG	23/ 59	39.0%	3-PT.	0/ 0	0.0%	FT	14/ 24	58.3%
Period 1			5/ 13	38.5%		0/ 0	0.0%		2/ 4	50.0%
Period 2			9/ 22	40.9%		0/ 0	0.0%		1/ 3	33.3%
Period 3			5/ 13	38.5%		0/ 0	0.0%		1/ 4	25.0%
Period 4			4/ 11	36.4%		0/ 0	0.0%		10/ 13	76.9%

Team: Henderson County

NO.	NAME	TOTAL FG		3-POINT		FT	FTA	REB			PF	TP	A	TO	BLK	S	MIN
		FG	FGA	FG	FGA			O	D	T							
20	McKechnie, J.	3	9	0	0	1	2	1	3	4	4	7	2	4	0	1	26
30	Enyart, Tricia	1	2	0	0	0	2	1	3	4	2	2	1	0	0	0	24
33	Warren, Jaycee	4	10	0	4	4	10	0	4	4	5	12	4	4	0	1	27
10	Hayden, Lisa	9	13	1	2	1	2	2	3	5	3	20	1	4	0	0	32
31	Duncan, Shelly	2	4	0	0	1	2	0	7	7	2	5	6	5	0	1	32
23	Dakley, Stacy	3	4	0	0	0	0	0	4	4	4	6	0	1	0	0	19
TEAM		22 / 42		1 / 6		7	18	4	24	28	20	52	14	18	0	3	160

Percentages:	Game-----	FG	22/ 42	52.4%	3-PT.	1/ 6	16.7%	FT	7/ 18	38.9%
Period 1			8/ 12	66.7%		0/ 0	0.0%		2/ 6	33.3%
Period 2			2/ 7	28.6%		0/ 1	0.0%		2/ 7	28.6%
Period 3			7/ 12	58.3%		0/ 3	0.0%		0/ 0	0.0%
Period 4			5/ 11	45.5%		1/ 2	50.0%		3/ 5	60.0%

OFFICIALS: Wayne Divine, Gary Gaddie, Alt. - Ken Catron
 Technicals: None

		SCORE BY PERIODS				
Manual		12	19	11	18	= 60
Henderson County		18	6	14	14	= 52

Player	Team	Henderson County	Time	Score	Manual	Player	Team
Oakley, Stacy, Enyart, Tricia		Hayden, Lisa, Warren, Jaycee, Duncan, Shelly			Dean, Monek, Smith, Angie, Doyle, Gwen, James, Ramonda, Drummond, Amy		
3-9	33.3%	5-15 33.3%	Warren, Jaycee, 2 Free Throws missed 1st made 2nd	4 7:17 #39-42	Foul on James, Ramonda	3	2
2		7	Foul on Enyart, Tricia	4 6:34			
7-10	70.0%	18-34 52.9%	6 ft Lane Turnaround by Hayden, Lisa	4 6:34 39-44*	Doyle, Gwen, 2 Free Throws made both	4-8	50.0% 6-13 46.1%
4		13	Assist by Warren, Jaycee	4 6:24	Sub In: Williams, Sam. Out: Smith, Angie		
4-10	40.0%	19-36 52.7%	Driving Layup by Warren, Jaycee	4 6:24 #41-44			
4-10	40.0%	6-16 37.5%	Warren, Jaycee, 1 Free Throw made	4 5:11 #43-44			
				4 5:07	Foul on Doyle, Gwen	4	3
				4 5:07 #44-44			
				4 4:30 44-46*	Layup Off Fast Break by Doyle, Gwen	8-17	47.0% 20-55 36.3%
					Assist by Dean, Monek	3	3
				4 4:09	Foul on James, Ramonda	4	4
			Sub In: McKechnie, J. Out: Enyart, Tricia	4 4:09			
			REB: 24 A: 13 BLK: 0 TO: 12 PF: 7	4 4:09	REB: 38 A: 3 BLK: 4 TO: 10 PF: 4		
			S: 3 FT: 6-16 37.5% FG: 19-37 51.3%	TIME - O U T	Manual No. 1	S: 4 FT: 6-13 46.1% FG: 20-55 36.3%	
1-1	100%	7-17 41.1%	Hayden, Lisa, 1 Free Throw made	4 4:09 #45-46			
1-2	50.0%	7-18 38.8%	Hayden, Lisa, 1 Free Throw missed	4 4:08			
				4 3:30 45-48*	4 ft Lane Jump shot by Doyle, Gwen	9-19	47.3% 21-57 36.8%
				4 3:07 45-50*	Bank Layup by Doyle, Gwen	10-20	50.0% 22-58 37.9%
2		8	Foul on Oakley, Stacy	4 3:07			
			REB: 25 A: 13 BLK: 0 TO: 14 PF: 8	4 3:07	REB: 39 A: 3 BLK: 4 TO: 10 PF: 4		
			S: 3 FT: 7-18 38.8% FG: 19-37 51.3%	No. 1 Henderson County	TIME - O U T	S: 6 FT: 6-13 46.1% FG: 22-58 37.9%	
8-12	66.6%	20-38 52.6%	12 ft Left Side Jump shot by Hayden, Lisa, made	4 3:07	Doyle, Gwen, 1 & Bonus missed 1st	4-9	44.4% 6-14 42.8%
				4 2:52 #47-50			
				4 2:35 47-52*	Driving Layup by Dean, Monek, made	5-14	35.7% 23-59 38.9%
				4 2:23	Steal by Doyle, Gwen	1	7
4		15	Bad Pass by Warren, Jaycee	4 2:22			
3		9	Foul on Oakley, Stacy	4 1:42			
			REB: 26 A: 13 BLK: 0 TO: 15 PF: 9	4 1:42	REB: 39 A: 3 BLK: 4 TO: 10 PF: 4		
			S: 3 FT: 7-18 38.8% FG: 20-38 52.6%	No. 2 Henderson County	TIME - O U T	S: 7 FT: 6-14 42.8% FG: 23-59 38.9%	
D-1	Tot-1	D-1	Tot-27	4 1:42	Doyle, Gwen, 1 & Bonus missed 1st	4-10	40.0% 6-15 40.0%
3-4	75.0%	21-39 53.8%	Rebound by McKechnie, J.	4 1:41			
			12 ft Right Base Line Turnaround by	4 1:28 #49-52			
			Oakley, Stacy, made	4 1:14			
			Foul on Hayden, Lisa	4 1:14 49-54*	Dean, Monek, 1 & Bonus made both	4-7	57.1% 8-17 47.0%
2-8	25.0%	21-40 52.5%	15 ft Lane Jump shot by McKechnie, J., missed	4 1:05			
4		11	Foul on Oakley, Stacy	4 1:05			
				4 1:05 49-56*	Williams, Sam., 1 & Bonus made both	2-2	100% 10-19 52.6%
9-13	69.2%	22-41 53.6%	3 pt 22 ft Left Angle Jump shot by	4 0:54 #52-56			
			Hayden, Lisa, made	4 0:42			
			Assist by Duncan, Shelly				
6		14	Foul on Duncan, Shelly	4 0:42			
2		12					
			REB: 27 A: 14 BLK: 0 TO: 15 PF: 12	4 0:42	REB: 39 A: 3 BLK: 4 TO: 10 PF: 4		
			S: 3 FT: 7-18 38.8% FG: 22-41 53.6%	No. 3 Henderson County	TIME - O U T	S: 7 FT: 10-19 52.6% FG: 23-59 38.9%	
				4 0:42 52-58*	Dean, Monek, 1 & Bonus made both	6-9	66.6% 12-21 57.1%
				4 0:34	Steal by Williams, Sam.	1	8
4		16	Bad Pass by Duncan, Shelly	4 0:34			
5		13	Foul on Warren, Jaycee	4 0:33			
			Sub In: Enyart, Tricia Out: Warren, Jaycee	4 0:33			
D-1	Tot-1	D-2	Tot-28	4 0:33	James, Ramonda, 1 & Bonus missed 1st	0-1	00.0% 12-22 54.5%
			Rebound by Oakley, Stacy	4 0:32			
4		17	Bad Pass by Hayden, Lisa	4 0:24	Steal by James, Ramonda	1	9
				4 0:22			
5		18	Bad Pass by Duncan, Shelly	4 0:18	Traveling Violation on James, Ramonda	2	11
4		14	Foul on McKechnie, J.	4 0:12			
				4 0:11			
2-4	50.0%	22-42 52.3%	16 ft Circle Jump shot by Duncan, Shelly, missed	4 0:10 52-60*	Dean, Monek, 1 & Bonus made both	8-11	72.7% 14-24 58.3%
				4 0:06			
				4 0:02	Rebound by Williams, Sam.	D-1	Tot-1 D-1 Tot-40

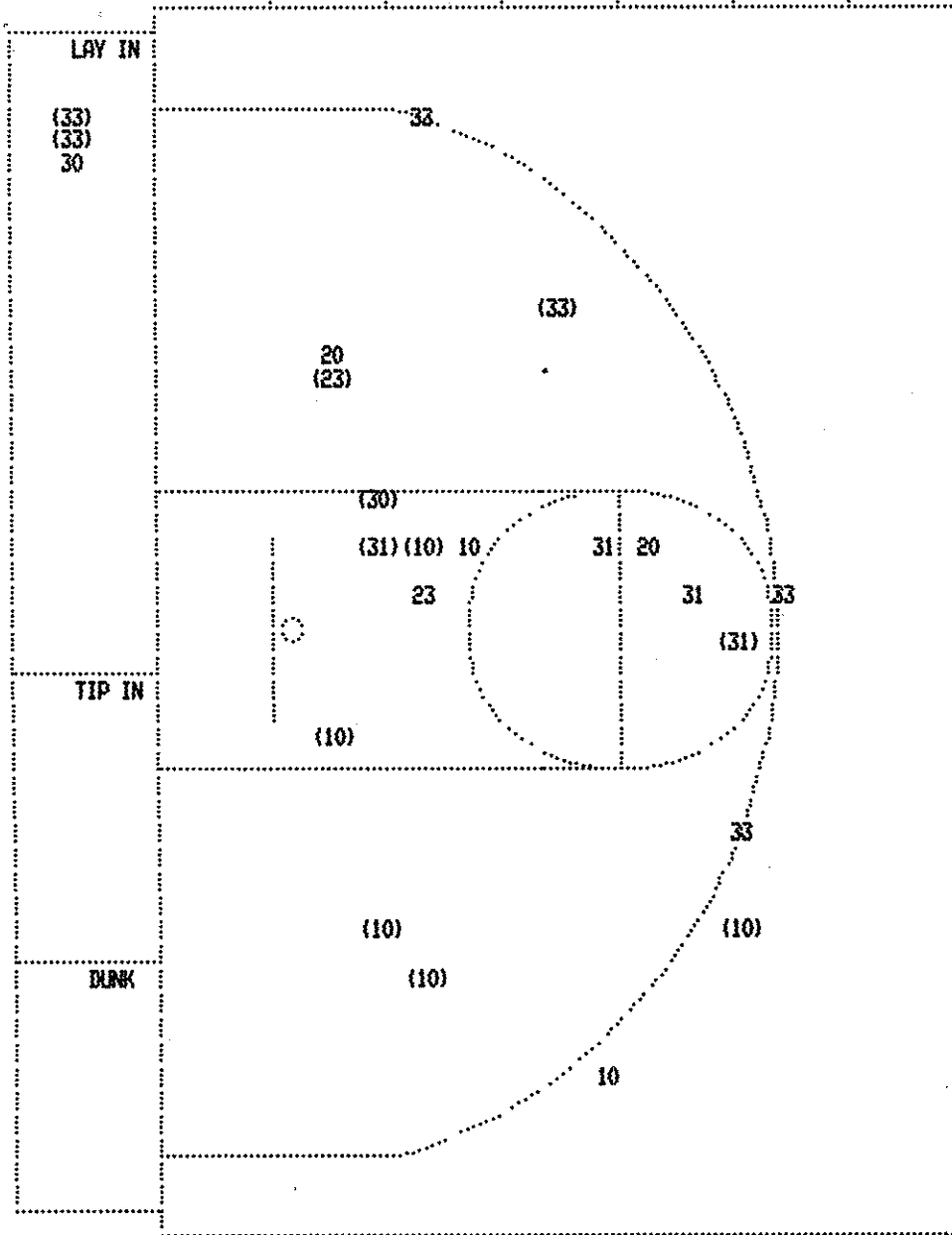
Manual "Lady Crimson" vs Henderson County "Lady Colonels"
 2nd Half Play by Play

Tip off at 7:30 p.m. on 03/23/88 at State Tourney, Frankfort
 Produced by the K.H.S.A.A. Stat Crew with FINNL III™

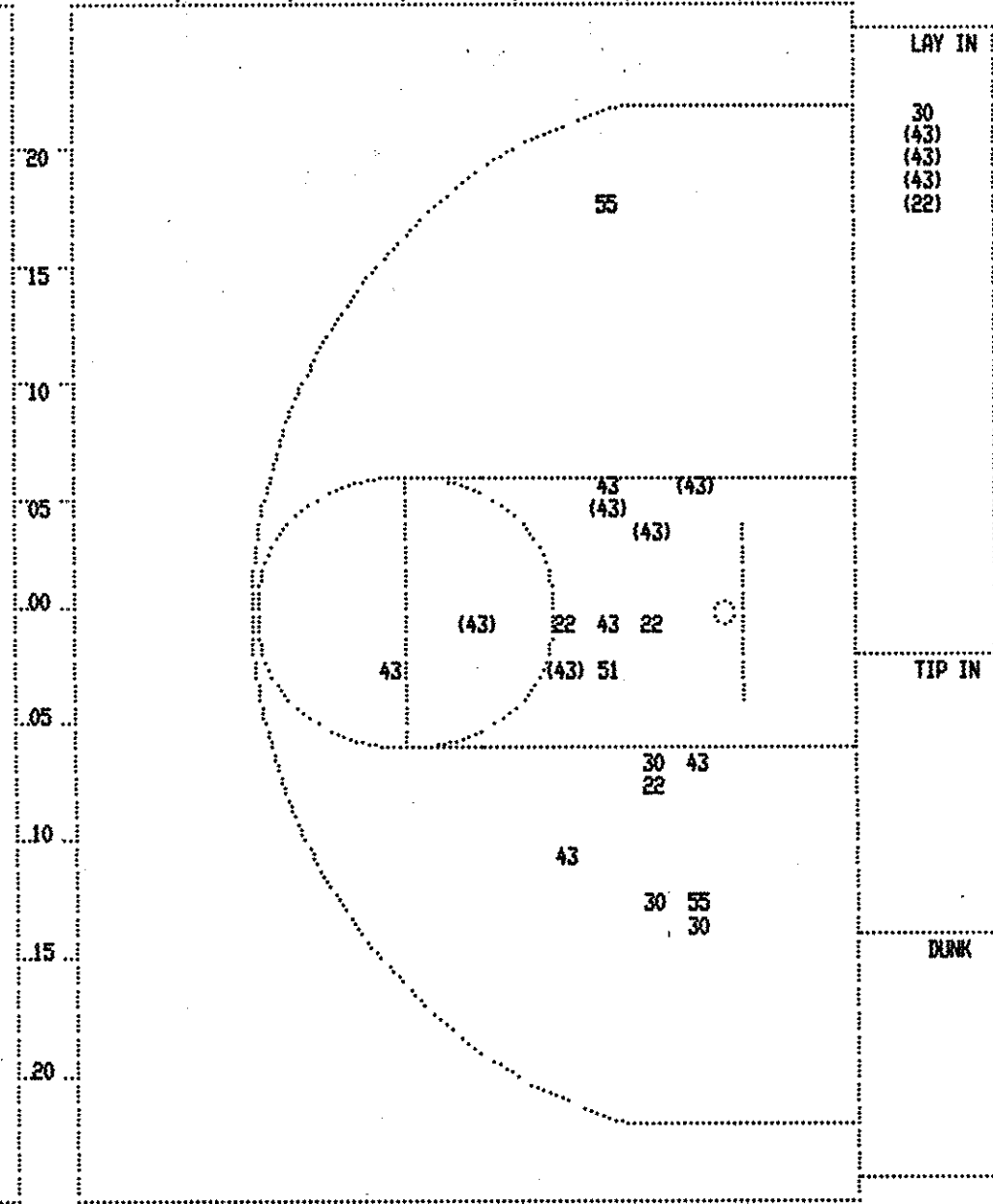
PAGE : 1

Player	Team	Henderson County	Time	Score	Manual	Player	Team
McKechnie, J., Enyart, Tricia	Warren, Jaycee	Hayden, Lisa, Duncan, Shelly			Doyle, Gwen, Williams, Sam., James, Ramonda, Dean, Monek, Drummond, Amy		
2-5	40.0%	11-20 55.0%	17 ft Right Side Jump shot by Warren, Jaycee	3 7:47	*26-31		
3	8	Assist by Duncan, Shelly					
5-7	71.4%	12-21 57.1%	15 ft Left Side Jump shot by Hayden, Lisa	3 7:31	26-33*	10 ft Lane Jump shot by Doyle, Gwen	3-8 37.5% 15-36 41.6%
4	9	Assist by Duncan, Shelly			3 7:12	*28-33	
1-1	100%	13-22 59.0%	4 ft Lane Bank by Duncan, Shelly	3 6:48		Foul on Drummond, Amy	2 1
2-2	100%	14-23 60.8%	18 ft Circle Jump shot by Duncan, Shelly	3 6:38	*30-33		
3	10	Assist by Warren, Jaycee			3 6:07	*32-33	
1	1	Foul on Duncan, Shelly			3 5:21		
2	2	Foul on McKechnie, J.			3 4:56		
2-2	100%	15-24 62.5%	6 ft Lane Jump shot by Enyart, Tricia	3 4:43	*34-33		
5	11	Assist by Duncan, Shelly			3 4:09		
4	3	Foul on Warren, Jaycee			3 4:09	Sub In: Smith, Angie Out: James, Ramonda	
6-8	75.0%	16-26 61.5%	4 ft Lane Jump shot by Hayden, Lisa	3 3:57	*35-33		
2	12	Assist by McKechnie, J.			3 3:33	35-35* Turnaround Layup by Doyle, Gwen	4-11 36.3% 16-43 37.2%
3	4	Foul on McKechnie, J.			3 2:41		
2	5	Foul on Hayden, Lisa			3 2:24		
		Sub In: Oakley, Stacy Out: McKechnie, J.			3 2:24		
					3 2:24	Dean, Monek, 2 Free Throws missed both	2-5 40.0% 3-9 33.3%
3-7	42.8%	17-29 58.6%	Driving Layup by Warren, Jaycee	3 2:18	36-37*	6 ft Left Base Line Follow by Doyle, Gwen	5-12 41.6% 17-46 36.9%
					3 2:05	*38-37	
					3 1:49	38-39* 6 ft Lane Jump shot by Doyle, Gwen	6-13 46.1% 18-47 38.2%
					3 1:11	Sub In: James, Ramonda Out: Williams, Sam.	
					3 1:11	38-41* 7 ft Left Side Turnaround by Doyle, Gwen	7-14 50.0% 19-48 39.5%
1	6	Foul on Oakley, Stacy			3 0:03		
					3 0:03	38-42* Doyle, Gwen, 2 Free Throws missed 1st made 2nd	2-6 33.3% 4-11 36.3%

SECOND HALF SHOT CHART Produced by the K.H.S.A.A. Stat Crew with FINAL III**



Henderson County			Player		
Player			Player		
20 - McKechnie,	0 / 2	0.0%	23 - Oakley, St	1 / 2	50.0%
30 - Enyart, Tr	1 / 2	50.0%			
33 - Warren, Ja	3 / 6	50.0%			
10 - Hayden, Li	5 / 7	71.4%			
31 - Duncan, Sh	2 / 4	50.0%			
Layups	1-9 Ft	10-15 Ft	Over 15 Ft	3 Pointers	Total
2 / 3	4 / 6	3 / 6	2 / 3	1 / 5	12 / 23
66.7%	66.7%	50.0%	66.7%	20.0%	52.2%



Manual			Player		
Player			Player		
43 - Doyle, Gwe	8 / 13	61.5%			
55 - Williams,	0 / 2	0.0%			
30 - James, Ram	0 / 4	0.0%			
22 - Dean, Mone	1 / 4	25.0%			
51 - Smith, Ang	0 / 1	0.0%			
Layups	1-9 Ft	10-15 Ft	Over 15 Ft	3 Pointers	Total
4 / 5	4 / 12	1 / 6	0 / 1		9 / 24
80.0%	33.3%	16.7%	0.0%		37.5%

Manual "Lady Crimson" vs Henderson County "Lady Colonels"
1st Half Play by Play

PAGE : 2

Tip off at 7:30 p.m. on 03/23/88 at State Tourney, Frankfort
Produced by the K.H.S.A.A. Stat Crew with FINAL III™

Player	Team	Henderson County	Time	Score	Manual	Player	Team
McKechnie, J., Oakley, Stacy, Warren, Jaycee, Hayden, Lisa, Duncan, Shelly		Ball to Lady Colonels				Doyle, Gwen, Williams, Sam., James, Ramonda, Dean, Monek, Drummond, Amy	
2-2	100%	9-13 69.2%	2	8:00	*20-12		
2	6	Driving Layup by Oakley, Stacy	2	7:38			
3	4	Assist by Duncan, Shelly	2	7:37			
		Foul on Warren, Jaycee	2	7:18	20-14* 6 ft Lane Bank by James, Ramonda	2-2	100% 6-14 42.8%
		Sub In: Enyart, Tricia Out: Warren, Jaycee	2	6:32	*22-14		
4-5	80.0%	10-14 71.4%	2	5:27	22-16* Follow Layup by Dean, Monek	3-6	50.0% 7-18 38.8%
1	7	10 ft Lane Jump shot by Hayden, Lisa	2	5:27			
		Assist by Enyart, Tricia	2	5:27			
1	5	Foul on Enyart, Tricia	2	5:02	22-18* Layup Off Fast Break by James, Ramonda	2-3	65.6% 2-5 40.0%
		Sub In: Enyart, Tricia Out: Warren, Jaycee	2	5:02	Assist by Dean, Monek	3-3	100% 8-20 40.0%
						1	1
		REB: 10 A: 7 BLK: 0 TO: 4 PF: 5	2	4:59			
		S: 2 FT: 2-6 33.3% FG: 10-17 58.8%			REB: 13 A: 1 BLK: 1 TO: 5 PF: 4		
		No. 1 Henderson County			S: 2 FT: 2-5 40.0% FG: 8-20 40.0%		
			2	4:24	22-20* Follow Layup by Drummond, Amy	1-1	100% 9-23 39.1%
1-2	50.0%	3-8 37.5%	2	4:10	Foul on Dean, Monek	1	5
		Duncan, Shelly, 1 & Bonus made 1st missed 2nd	2	4:10	*23-20		
0-2	00.0%	3-10 30.0%	2	4:07	Foul on Doyle, Gwen	2	6
		Enyart, Tricia, 2 Free Throws missed both	2	4:07			
		Sub In: Warren, Jaycee Out: Enyart, Tricia	2	3:38	23-22* Follow Layup by Williams, Sam.	2-6	33.3% 10-26 38.4%
			2	3:28			
1-5	20.0%	3-11 27.2%	2	3:07	23-24* Follow Layup by James, Ramonda	4-4	100% 11-29 37.9%
1	6	Warren, Jaycee, 1 & Bonus missed 1st	2	2:47	23-26* 18 ft Right Base Line Jump shot by Dean, Monek	4-9	44.4% 12-30 40.0%
		Foul on McKechnie, J.	2	2:32	Foul on Drummond, Amy	1	7
			2	2:32			
			2	1:39			
			2	1:39	23-27* Doyle, Gwen, 2 Free Throws missed 1st made 2nd	1-4	25.0% 3-7 42.8%
			2	0:55	23-29* Driving Layup by Doyle, Gwen	2-7	28.5% 13-33 39.3%
					Assist by Dean, Monek	2	2
			2	0:34	Foul on Doyle, Gwen	3	8
			2	0:34	Sub In: Smith, Angie Out: Doyle, Gwen		
2-7	28.5%	4-13 30.7%	2	0:34	*24-29		
		Warren, Jaycee, 2 Free Throws made 1st missed 2nd	2	0:03	24-31* 10 ft Right Base Line Follow by Williams, Sam.	3-9	33.3% 14-35 40.0%

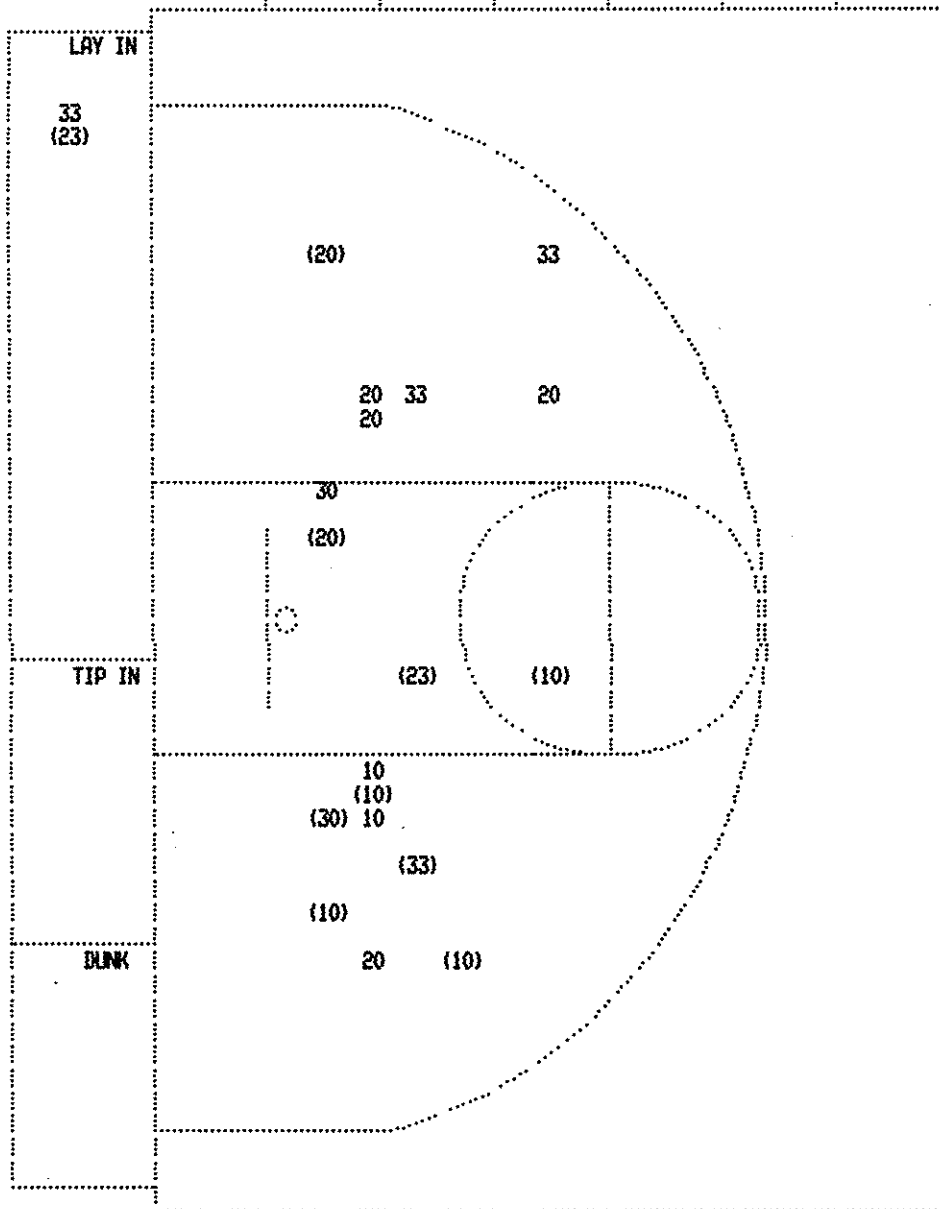
Manual "Lady Crimson" vs Henderson County "Lady Colonels"
1st Half Play by Play

Tip off at 7:30 p.m. on 03/23/88 at State Tourney, Frankfort
Produced by the K.H.S.A.A. Stat Crew with FINFL III**

PAGE : 1

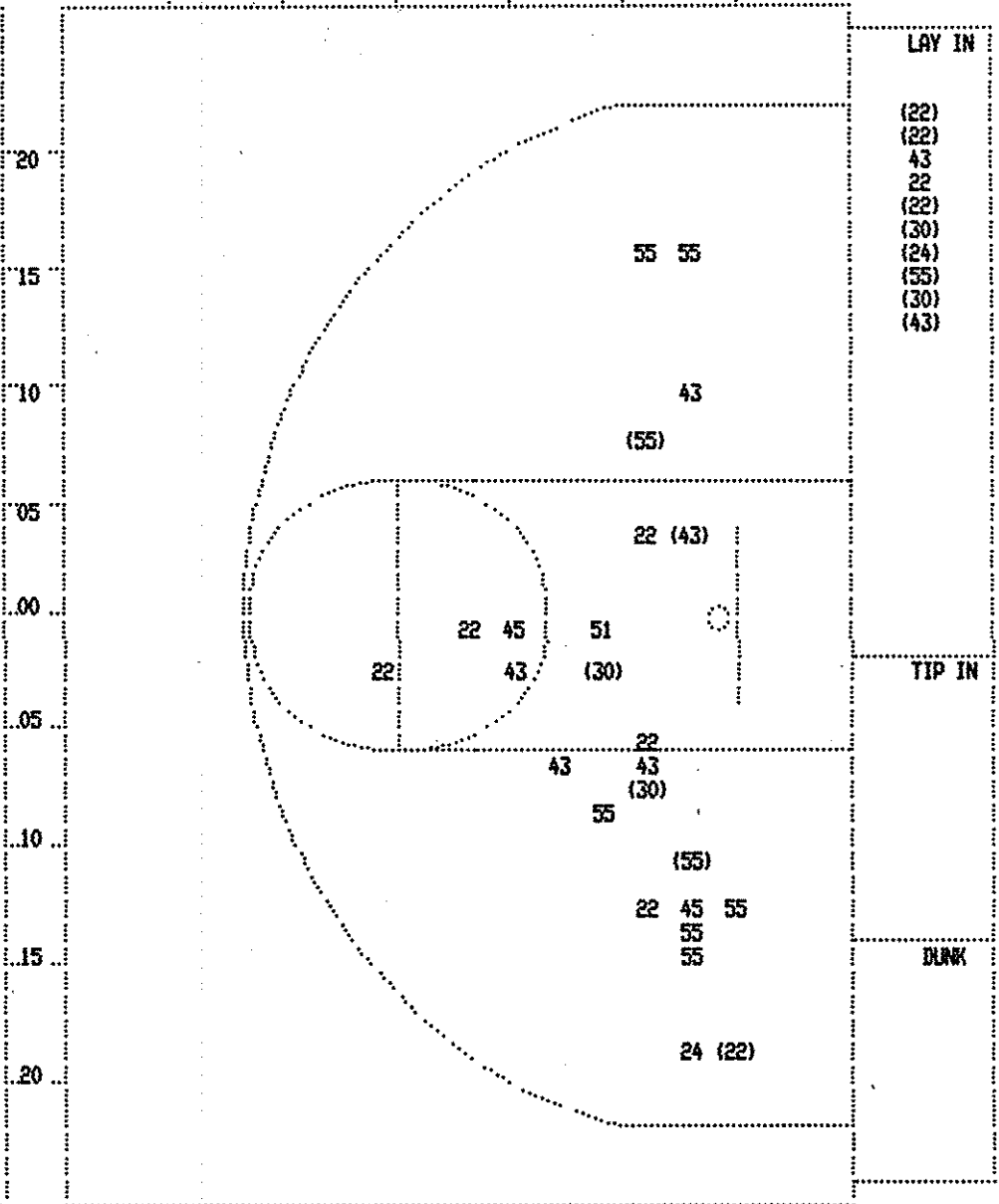
Player	Team	Henderson County	Time	Score	Manual	Player	Team
McKechnie, J., Enyart, Tricia, Warren, Jaycee, Hayden, Lisa, Duncan, Shelly					Doyle, Gwen, Williams, Sam., James, Ramonda, Dean, Monek, Drummond, Amy		
1-1	100%	1-1 100%	11 ft Left Side Bank by Warren, Jaycee	1 7:46 0-2*	4 ft Lane Bank by James, Ramonda	1-1	100% 1-1 100%
				1 7:26 *2-2			
				1 6:37	Foul on James, Ramonda	1	1
				1 6:28	Foul on James, Ramonda	2	2
				1 6:28	Sub In: Smith, Angie Out: James, Ramonda		
1-2	50.0%	1-2 50.0%	McKechnie, J., 2 Free Throws made 1st missed 2nd	1 6:28 *3-2			
1-2	50.0%	2-3 66.6%	16 ft Right Base Line Jump shot by McKechnie, J.	1 6:18 3-4*	Layup Off Fast Break by Dean, Monek	1-1	100% 2-3 66.6%
			Assist by Warren, Jaycee	1 5:31 *5-4			
1-1	100%	3-4 75.0%	8 ft Left Base Line Jump shot by Enyart, Tricia	1 5:00 *7-4			
			Assist by Hayden, Lisa				
2-3	66.6%	4-6 66.6%	4 ft Lane Follow by McKechnie, J.	1 4:28 *9-4			
1-1	100%	5-7 71.4%	12 ft Left Base Line Jump shot by Hayden, Lisa	1 4:04 *11-4			
			Assist by Duncan, Shelly				
			Foul on Hayden, Lisa	1 3:56			
				1 3:54 11-6*	Driving Layup by Dean, Monek	2-2	100% 3-6 50.0%
				1 3:37 11-8*	8 ft Left Side Bank by Williams, Sam.	1-2	50.0% 4-7 57.1%
			Foul on Warren, Jaycee	1 3:03			
				1 3:03	Doyle, Gwen, 2 Free Throws missed both	0-2	00.0% 0-2 00.0%
				1 2:44	Foul on Doyle, Gwen	1	3
				1 2:44	Sub In: Mills, Johnnye Out: Williams, Sam.		
1-2	50.0%	2-4 50.0%	Warren, Jaycee, 2 Free Throws made 1st missed 2nd	1 2:44 *12-8			
				1 2:13	Foul on Smith, Angie	1	4
1-4	25.0%	2-6 33.3%	Warren, Jaycee, 2 Free Throws missed both	1 2:13			
				1 1:55 12-10*	4 ft Lane Follow by Doyle, Gwen	1-4	25.0% 5-11 45.4%
2-3	66.6%	6-9 66.6%	15 ft Left Side Jump shot by Hayden, Lisa	1 1:41 *14-10			
3-4	75.0%	7-10 70.0%	6 ft Left Side Bank by Hayden, Lisa	1 1:11 *16-10			
			Assist by McKechnie, J.				
			Foul on Warren, Jaycee	1 0:27			
			Sub In: Oakley, Stacy Out: Enyart, Tricia	1 0:27			
1-1	100%	8-12 66.6%	4 ft Lane Turnaround by Oakley, Stacy	1 0:27 16-12*	Dean, Monek, 2 Free Throws made both	2-2	100% 2-4 50.0%
			Assist by Warren, Jaycee	1 0:01 *18-12			

FIRST HALF SHOT CHART Produced by the K.H.S.A.A. Stat Crew with FINAL III™



Henderson County

Player	Player	Player			
20 - McKechnie, 2 / 6 33.3%					
30 - Enyart, Tr 2 / 2 100.0%					
33 - Warren, Ja 1 / 4 25.0%					
10 - Hayden, Li 4 / 6 66.6%					
23 - Oakley, St 2 / 2 100.0%					
Layups	1-9 Ft	10-15 Ft	Over 15 Ft	3 Pointers	Total
1 / 2	5 / 7	4 / 9	1 / 1	0 / 1	11 / 20
50.0%	71.4%	44.4%	100.0%	0.0%	55.0%



Manual

Player	Player	Player			
43 - Doyle, Gwe 2 / 7 28.5%	45 - Mills, Joh 0 / 2 0.0%				
55 - Williams, 3 / 9 33.3%	51 - Smith, Ang 0 / 1 0.0%				
30 - James, Ram 4 / 4 100.0%					
22 - Dean, Mone 4 / 10 40.0%					
24 - Drummond, 1 / 2 50.0%					
Layups	1-9 Ft	10-15 Ft	Over 15 Ft	3 Pointers	Total
8 / 10	4 / 12	1 / 9	1 / 4		14 / 35
80.0%	33.3%	11.1%	25.0%		40.0%

BOX SCORE: * OFFICIAL FIRST HALF * Date: 03-23-88 Site: State Tourney, Frankfort Attendance:

Team: Manual

NO.	NAME	TOTAL FG		3-POINT		FT	FTA	REB			PF	TP	A	TO	BLK	S	MIN	
		FG	FGA	FG	FGA			O	D	T								
43	Doyle, Gwen	2	7	0	0	1	4	3	6	9	3	5	0	4	1	1	15	
55	Williams, Sam.	3	9	0	0	0	0	2	1	3	0	6	0	2	1	0	14	
30	James, Ramonda	4	4	0	0	0	0	4	1	5	2	8	0	0	0	0	9	
22	Dean, Morek	4	10	0	0	2	3	2	1	3	1	10	2	0	0	0	16	
24	Drummond, Amy	1	2	0	0	0	0	1	2	3	1	2	0	0	0	1	16	
51	Smith, Angie	0	1	0	0	0	0	1	0	1	1	0	0	1	0	1	7	
45	Mills, Johnnye	0	2	0	0	0	0	0	1	1	0	0	0	0	0	0	3	
TEAM																		
TOTALS		14	35	0	0	3	7	13	12	25	8	31	2	7	2	3	80	

Percentages:	HALF-----	FG	FT	3-PT.	Deadball	Rebounds
Period 1	5/13	38.5%	0/0	0.0%	2/4	50.0%
Period 2	9/22	40.9%	0/0	0.0%	1/3	33.3%

Team: Henderson County

NO.	NAME	TOTAL FG		3-POINT		FT	FTA	REB			PF	TP	A	TO	BLK	S	MIN	
		FG	FGA	FG	FGA			O	D	T								
20	McKechnie, J.	2	6	0	0	1	2	1	1	2	1	5	1	3	0	1	16	
30	Enyart, Tricia	1	1	0	0	0	2	1	0	1	1	2	1	0	0	0	10	
33	Warren, Jaycee	1	4	0	1	2	7	0	1	1	3	4	2	1	0	1	14	
10	Hayden, Lisa	4	6	0	0	0	0	1	1	2	1	8	1	3	0	0	16	
31	Duncan, Shelly	0	0	0	0	1	2	0	4	4	0	1	2	2	0	1	16	
23	Oakley, Stacy	2	2	0	0	0	0	0	3	3	0	4	0	1	0	0	8	
TEAM																		
TOTALS		10	19	0	1	4	13	3	10	13	6	24	7	10	0	3	80	

Percentages:	HALF-----	FG	FT	3-PT.	Deadball	Rebounds
Period 1	8/12	66.7%	0/0	0.0%	2/6	33.3%
Period 2	2/7	28.6%	0/1	0.0%	2/7	28.6%

OFFICIALS: Wayne Divine, Gary Gaddie, Alt.-Ken Catron
 Technicals: None

SCORE BY PERIODS

Manual	12	19	=	31
Henderson County	18	6	=	24